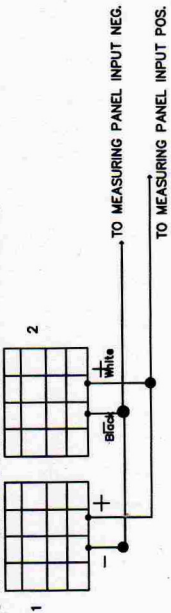
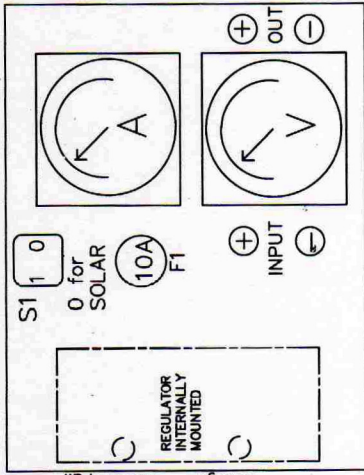


2x20W PORTABLE SOLAR PANELS



SOLAR CELL REGULATOR 'CHARGE' & 'ACCUM. FULL' LIGHTS ARE INTERNAL & VIEWABLE THROUGH 2 x 8MM HOLES DRILLED INTO THE SIDE OF THE ENCLOSURE

Dimensions: 160x120x75deep



CIG. LIGHTER SOCKET

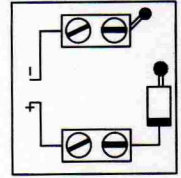
POLY ENCLOSURE

| ITEM | PURPOSE | COST |
|---------------------|---------|------|
| REGULATOR | | \$30 |
| VOLTMETER | | \$22 |
| AMMETER | | \$15 |
| ROCKER SWITCH | | \$4 |
| PANEL FUSE HOLDER | | \$4 |
| CIG. LIGHTER SOCKET | | \$8 |
| 4 X 4mm TERMINALS | | \$5 |
| POLY ENCLOSURE | | \$10 |
| TOTAL | | \$98 |

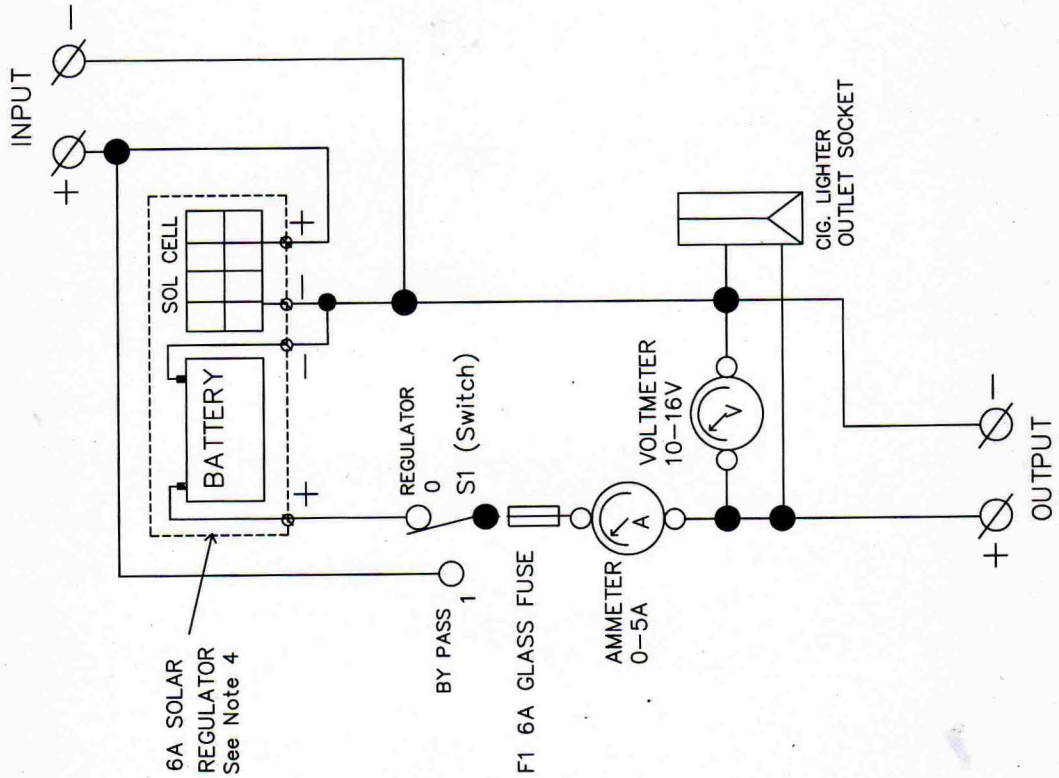
| S1 POSITION | PURPOSE | INPUT TERMINAL | OUTPUT TERMINAL |
|-------------|----------------------|----------------|-----------------|
| 1 | MEASURE VOLTS & AMPS | 12V BATTERY | 12V LOAD |
| 0 | SOLAR PANEL CHARGING | SOLAR PANELS | 12V BATTERY |

NOTES

- SOLAR PANELS SHOWN ARE 20W, MONO CRYSTALLINE Si. $I_{sc} = 1.2A$, Cost ~ \$104 for both, ebay Dec. 2009.
- 6A SOLAR REGULATOR IS FROM JAYCAR
- AMMETER IS FROM JAYCAR, VOLTMETER FROM ebay
- CIRCUIT COULD BE USED FOR 2X40W SOLAR PANELS WHERE $I_{sc} = 2 \times 2.65A$



20W SOLAR PANEL .JBOX



CIRCUIT DIAGRAM

MULTIPURPOSE DC MEASURING PANEL

MULTIPANEL
K. Davis
JAN 2010