

# LIFEBATT LiFePO4 Battery Packs - High Power Series

## A. 12V Packs

1210-HPS : 12V/10Ah	1220-HPS : 12V/20Ah	1230-HPS : 12V/30Ah	1240-HPS : 12V/40Ah
			
Weight : 2.3kgs (5.1lbs) Size: L182 x W182 x H 70.5 mm L7.17 x W7.17 x H 2.18 inch	Weight : 4.2kgs (9.2lbs) Size: L182 x W182 x H 116 mm L7.17 x W7.17 x H 4.57 inch	Weight : 6.2kgs (13.6lbs) Size: L182 x W182 x H 161.5 mm L7.17 x W7.17 x H 6.36 inch	Weight : 8.2kgs (18.0lbs) Size: L182 x W182 x H 207 mm L7.17 x W7.17 x H 8.15 inch
1260-HPS : 12V/60Ah	1280-HPS : 12V/80Ah	12120-HPS : 12V/120Ah	
			
Weight : 12.5kgs (27.5lbs) Size: L364 x W182 x H 161.5 mm L14.33 x W7.17 x H 6.36 inch	Weight : 16.8kgs (36.3lbs) Size: L364 x W182 x H 207mm L14.33 x W7.17 x H 8.15 inch	Weight : 24.5kgs (53.9lbs) Size: L546 x W182 x H 207 mm L21.5 x W7.17 x H 8.15 inch	

# LIFEBATT LiFePO4 Battery Packs - High Power Series

## B. 24V Packs

<b>2410-HPS : 24V/10Ah</b>	<b>2420-HPS : 24V/20Ah</b>	<b>2430-HPS : 24V/30Ah</b>	<b>2440-HPS : 24V/40Ah</b>
			
Weight : 4.2kgs (9.2lbs) Size: L182 x W182 x H 116 mm L7.17 x W7.17 x H 4.57 inch	Weight : 8.2kgs (18.0lbs) Size: L182 x W182 x H 207 mm L7.17 x W7.17 x H 8.15 inch	Weight : 12.5kgs (27.5lbs) Size: L546 x W182 x H 116 mm L21.5 x W7.17 x H 4.57 inch	Weight : 16.8kgs (36.3lbs) Size: L364 x W182 x H 207mm L14.33 x W7.17 x H 8.15 inch
<b>2460-HPS : 24V/60Ah</b>			
			
Weight : 24.5kgs (53.9lbs) Size: L546 x W182 x H 207 mm L21.5 x W7.17 x H 8.15 inch			

# LIFEBATT LiFePO4 Battery Packs - High Power Series

## C. 36V Packs


<b>3610-HPS : 36V/10Ah</b>	<b>3620-HPS : 36V/20Ah</b>	<b>3630-HPS : 36V/30Ah</b>	<b>3640-HPS : 36V/40Ah</b>
			
Weight : 6.2kgs (13.6lbs) Size: L182 x W182 x H 161.5 mm L7.17 x W7.17 x H 6.36 inch	Weight : 12.5kgs (27.5lbs) Size: L364 x W182 x H 161.5 mm L14.33 x W7.17 x H 6.36 inch	Weight : 18.8kgs (41.45lbs) Size: L546 x W182 x H 161.5 mm L21.5 x W7.17 x H 6.36 inch	Weight : 24.5kgs (53.9lbs) Size: L546 x W182 x H 207 mm L21.5 x W7.17 x H 8.15 inch

## D. 48V Packs

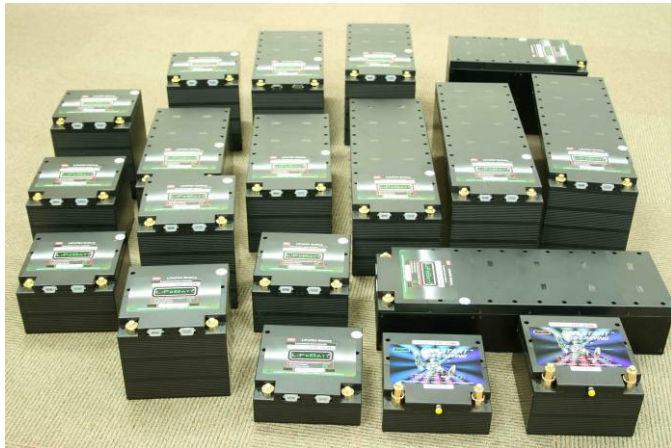
<b>4810-HPS : 48V/10Ah</b>	<b>4820-HPS : 48V/20Ah</b>	<b>4830-HPS : 48V/30Ah</b>	
			
Weight : 8.2kgs (18.0lbs) Size: L182 x W182 x H 207 mm L7.17 x W7.17 x H 8.15 inch	Weight : 16.8kgs (36.3lbs) Size: L364 x W182 x H 207mm L14.33 x W7.17 x H 8.15 inch	Weight : 24.5kgs (53.9lbs) Size: L546 x W182 x H 207 mm L21.5 x W7.17 x H 8.15 inch	

# LIFEBATT LiFePO4 Battery Packs - High Power Series

## E. High Voltage Packs

<b>7210-HPS : 72V/10Ah</b>	<b>9610-HPS : 96V/10Ah</b>	<b>10810-HPS : 108V/10Ah</b>	<b>14410-HPS : 144V/10Ah</b>
			
Weight : 12.5kgs (18.0lbs) Size: L364 x W182 x H 161.5 mm L14.33 x W7.17 x H 6.36 inch	Weight : 16.8kgs (36.3lbs) Size: L364 x W182 x H 207mm L14.33 x W7.17 x H 8.15 inch	Weight : 18.8kgs (41.4lbs) Size: L546 x W182 x H 161.5 mm L21.5 x W7.17 x H 6.36 inch	Weight : 24.5kgs (53.9lbs) Size: L546 x W182 x H 207 mm L21.5 x W7.17 x H 8.15 inch

## HPS Family



**LIFEBATT LiFePO4 Battery Packs - High Power Series**